

# SANHUA TXY/XYQ SERIES Muffler



Muffler are used in refrigerating systems such as household air conditioners or commercial air conditioners. Muffler are installed in discharge line or other pipes with vibration and noise to eliminate and alleviate noises.



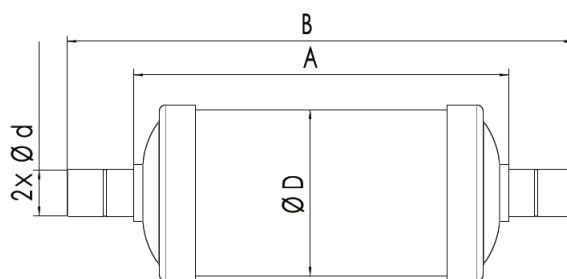
## FEATURES

- CORROSION RESISTANT: FINISHED WITH EPOXY POWDER PAINTING
- EXCELLENT ANTI-SHOCK AND ANTI-VIBRATION PERFORMANCE WITH STEEL OR COPPER CASING

## GENERAL SPECIFICATIONS

- Applicable refrigerant: R22, R410A and R407C
- Applicable medium temperature: -30°C~+120°C (-22°F~+240°F)
- Applicable ambient temperature: -30°C~ +55°C (-22°F~+131°F)
- Maximum working pressure: 4.8MPa
- Certification: UL, CSA

## TECHNICAL PARAMETERS



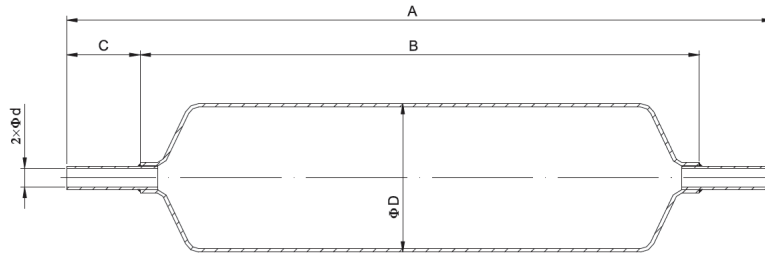
Regular Steel Muffler

Model	Dimensions					Connection Type
	D mm	A mm	B mm	d in	d in	
TXY-A23070-001	63	76.2	154.4	1/2	1/2	Solder Connections
TXY-A31070-001	76	115.6	163.8	1/2	1/2	
TXY-A36070-001	76	190.5	238.7	1/2	1/2	
TXY-A45070-001	76	123.9	231.9	1/2	1/2	



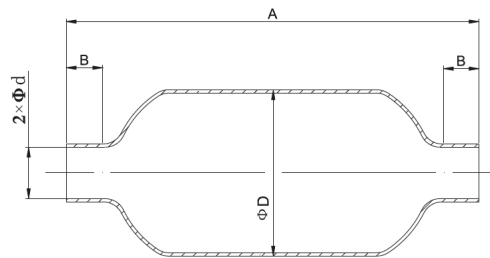


# SANHUA TXY/XYQ SERIES Muffler



Spun Steel Muffler

Model	Dimensions					Connection Type
	D mm	A mm	B mm	C mm	d in	
XYQ-FXX025	25,4	70~330	120~450	25~150	1/2, 1/4, 3/8	Solder Connections
XYQ-FXX031	31,75	70~330	120~450	25~150	1/2, 1/4, 3/8	
XYQ-FXX035	35	70~330	120~450	25~150	1/2, 1/4, 3/8	
XYQ-FXX040	40	70~330	120~450	25~150	1/2, 1/4, 3/8	
XYQ-FXX048	48	90~330	120~450	25~150	1/2, 1/4, 3/8	
XYQ-FXX050	50,8	90~330	120~450	25~150	1/2, 1/4, 3/8	
XYQ-FXX065	65	130~330	120~450	25~150	1/2, 1/4, 3/8	



Spun Copper Muffler

Model	Dimensions				Connection Type
	D mm	B mm	A mm	d in	
XYQ-CXX025	25,4	5~15	70~330	1/2, 1/4, 3/8	Solder Connections
XYQ-CXX030	30	5~15	70~330	1/2, 1/4, 3/8	
XYQ-CXX031	31,75	5~15	70~330	1/2, 1/4, 3/8	
XYQ-CXX035	35	5~15	70~330	1/2, 1/4, 3/8	
XYQ-CXX041	41,3	5~15	90~330	1/2, 1/4, 3/8	
XYQ-CXX048	48	5~15	90~330	1/2, 1/4, 3/8	
XYQ-CXX050	50,8	5~15	90~330	1/2, 1/4, 3/8	

